



Surveying and Mapping Services

Woolpert has been providing professional surveying services since 1911. With professional licensure in 34 states, Woolpert is one of the largest surveying firms in the country, supported by over 150 technical and professional experts who combine technology and expertise to provide our clients with high-quality and cost-effective surveying and mapping services. When combined with our photogrammetry and aerial mapping staff, Woolpert can meet the most demanding surveying and mapping projects.

Woolpert's surveying and mapping services can take your project from the initial planning stages through design and construction. Woolpert has national and international experience gained from our involvement on thousands of projects spanning nearly a century. As a result, we provide our clients with a reliable and credible resource for all required surveying and mapping services, using traditional and sophisticated surveying techniques complemented by a unique combination of dedicated professional and technical staff.

*With Woolpert's
national presence
and nearly a century
of surveying
experience, we can
successfully complete
any project,
anywhere, anytime.*

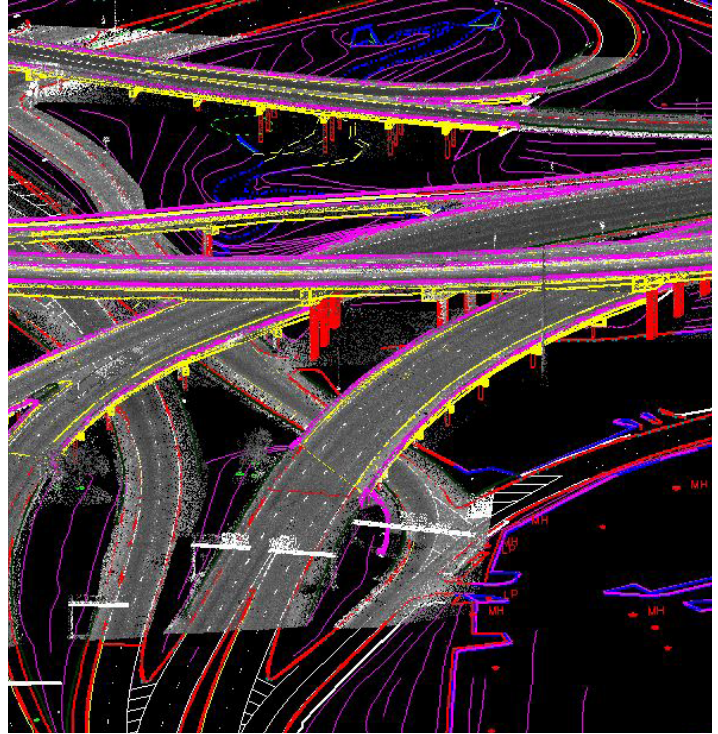


WOOLPERT

ARCHITECTURE | ENGINEERING | GEOSPATIAL



With our national presence, ongoing commitment to technology and training, and the manpower to support both large and small projects, Woolpert can complete your project with confidence. Whatever your surveying and mapping needs, Woolpert will partner with you to provide the skills, technology, and professionalism to successfully complete your project wherever and whenever you need it.



The firm's commitment to providing our teams with the best technology has led to an investment of more than \$6.5 million during the last five years alone. Woolpert operates a fleet of six aircraft equipped with the latest GPS, such as GLONASS and digital aerial sensors. We also maintain one of the largest inventories of sophisticated GPS, Robotic Total Station, laser-scanning systems and the latest ground-penetrating radar (GPR). Since many of our projects also require that we accurately locate underground utilities, we have made additional technology and training investments to support utility designation and excavation. In addition to our investment in technology, we have committed substantial time and resources to safety training for our professionals, which in turn reduces the amount of risk and liability associated with the projects we are involved in.

3-D Laser Scanning/As-Builts
Aerial Photography
Airborne LiDAR
Asset Management/Condition Assessments
Obstruction Analysis Surveys
Aeronautical Surveys
American Land Title Association (ALTA)

Boundary Construction
RPI Surveys
Geodetic Control/Height Modernization
Ground Penetrating Radar (GPR)
Highway Design & Right-of-Way

Hydrographic Surveys/
Cross-Sections
Subsurface Utility Engineering (SUE)
Topographic Mapping
Utility Infrastructure Inspection/
Inventory
Volume & Stockpile Surveys

For more information, please call 800.414.1045
or visit our website at www.woolpert.com

