

ASM

AIRPORT SAFETY MANAGER



Airport Safety Manager (ASM)

The need to automate FAR Part 139 record-keeping and reporting has never been greater. Woolpert's Airport Safety Manager (ASM) is a robust, mobile airfield inspection system utilized since 1997 in some of the country's most demanding airport environments. Incorporating geographically based map views and ample electronic forms and reports, ASM expedites and automates many labor-intensive inspection reporting tasks and processes. Additionally, ASM makes it easy to summarize daily field operations for management and coordinate inspections, repair and re-inspection workflows.

"Woolpert provides full 24/7 software support to help you reap the rewards of this mature, industry-leading solution."



WOOLPERT
ARCHITECTURE | ENGINEERING | GEOSPATIAL

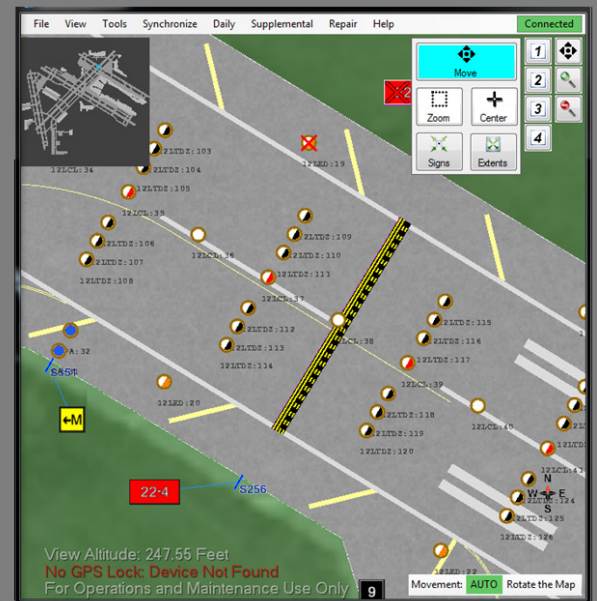
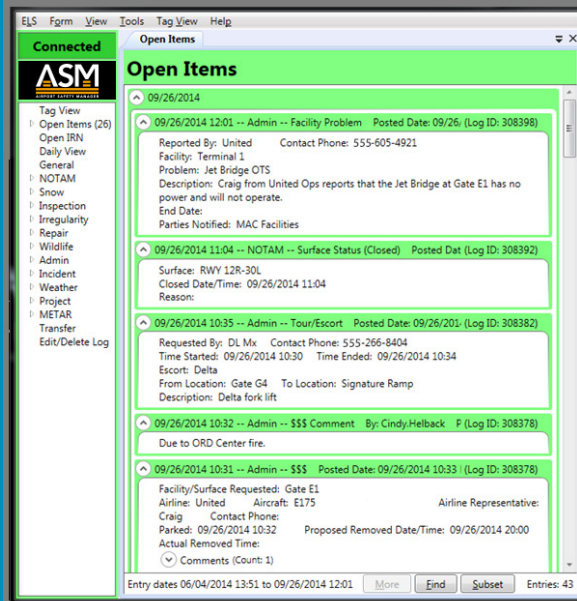
Tested, proven and continually improved for more than 17 years to support the essential business functions your airport demands, ASM merges your requirement for increased efficiency and enhanced accuracy with a software package specifically designed for airport operations. Woolpert provides 24/7 software support and customized training to help you reap the rewards of this mature, industry-leading solution. To further enhance the functionality of ASM, our team of experienced airport asset management and GIS professionals is working to integrate it with computerized maintenance management systems (CMMS), FAA-compliant GIS data and safety management system (SMS) processes and procedures.



Operates on any Windows XP, 7 or 8 mobile computer

The comprehensive ASM solution streamlines your inspection and reporting activities with the following features:

- Customizable forms and reports readily accepted by FAA certification inspectors
- Synchronization with FAA's NOTAM system
- Daily inspection forms prompted by pre-determined reporting requirements
- Attach files and geo-referenced photos to logs and reports
- Interactive GPS Moving Map and selectable map features
- Password-protected digital signatures for record certification
- Multi-user database with login security
- Compatibility with standard Microsoft® Windows operating systems



For more information, please contact:

Tom Mochty, SVP
Aviation Practice Leader
937.461.5660

Kevin Shirer, AAE
Program Director
480.707.3501

Visit our website at www.woolpert.com

