



## Mobile Mapping Services

Today's surveyors have a wide variety of high-tech tools at their disposal; one of these powerful technologies is mobile mapping. This new collection method eliminates disruptions to motorists and removes surveyors from harm's way. Woolpert's unique system combines latest-generation lidar sensors, digital cameras, and position and orientation systems to collect fast, accurate and valuable 3D data.

Woolpert has collected and processed over 12,000 miles of mobile mapping data for the transportation, asset management, energy, aviation and disaster response industries.

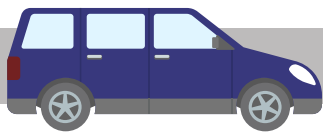
Woolpert's state-of-the-art mobile mapping system collects data from the fast lane.

#### Optech Lynx M1 Mobile Mapping System

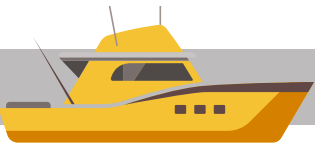
- Two lidar sensors
  - 360 degree coverage
  - 1 million points per second
- Four 5-megapixel cameras
  - Custom mounting ability
- Advanced positioning and orientation system
  - Two GPS/GNSS receivers
  - 200 Hz Applanix LV inertial measurement unit
  - Distance measuring indicator

### Versatile Vehicles

Woolpert's mobile mapping system can be used in many environments.



For roads, bridges and asset collections



For coastal and marine collections



For rail and train control collections



For rural and trail collections

### Mobilizing the Benefits

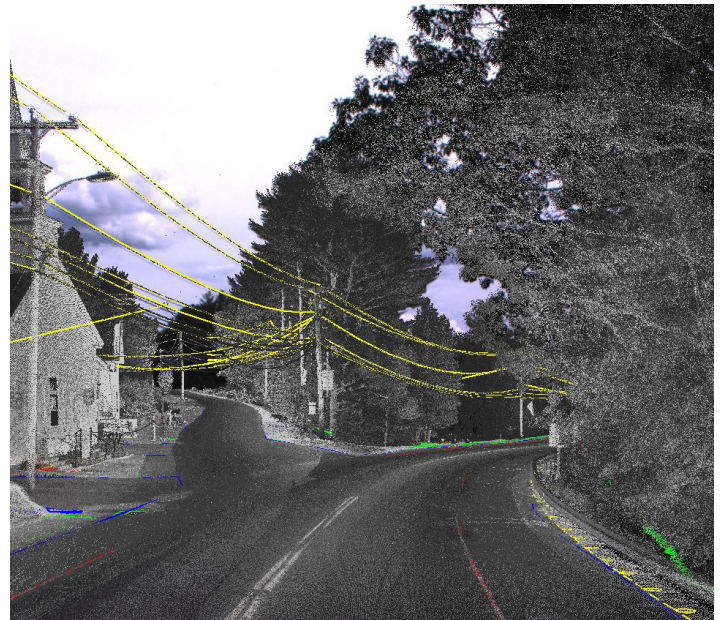
Mobile mapping reduces the challenges presented by aerial mapping, including mapping under tree canopies, under bridges and around buildings. Issues posed by weather, such as low cloud cover, also are avoided. Mobile mapping systems are not constrained by airspace restrictions around airports, unlike airborne systems.

### Ahead of the Curve

Woolpert's team of mobile mapping experts takes pride in understanding the balance between client expectations, schedules and budgets. We've invested in researching and developing proprietary workflows—such as smart control, enhanced drive planning and custom feature extraction algorithms—to improve industry guidelines and standards. As one of the nation's largest geospatial firms—with more than 250 surveying, mapping and GIS professionals—we provide clients with high-quality and cost-effective surveying and mapping services.

### Mobile Mapping Support Services

- Customized GIS databases
- Database integration
- Database migration
- Custom feature attribution
- Vector data
- Surface models
- Haul route documentation
- As-built documentation



For more information, please call 800.414.1045  
or visit [woolpert.com](http://woolpert.com)

