



Bathymetric Services

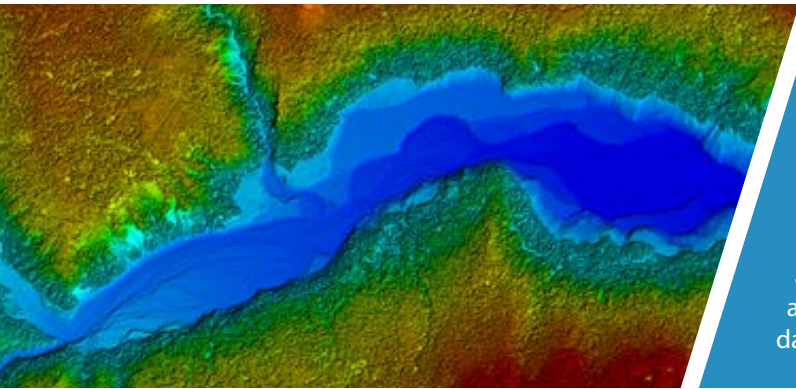
Accurate bathymetric data is crucial for safe navigation and decision-making—both above and below the water’s surface. Government entities, engineers and coastal management personnel all rely on bathymetric mapping for accurate snapshots of the terrain below the water’s surface. Whether mapping near-shore topography, riverine environments or inland waterways, your projects will benefit from Woolpert’s state-of-the-art bathymetric services.

Our team of geospatial professionals includes experts with more than a dozen years of industry experience. Woolpert has successfully completed numerous projects for federal agencies, the private sector and international governments. Our project experience spans a wide variety of bathymetric applications, including coastal mapping and charting, coastal resilience and management, and hurricane disaster response.

*Woolpert
has been
performing
bathymetric
lidar services
since 2004.*



WOOLPERT
ARCHITECTURE | ENGINEERING | GEOSPATIAL

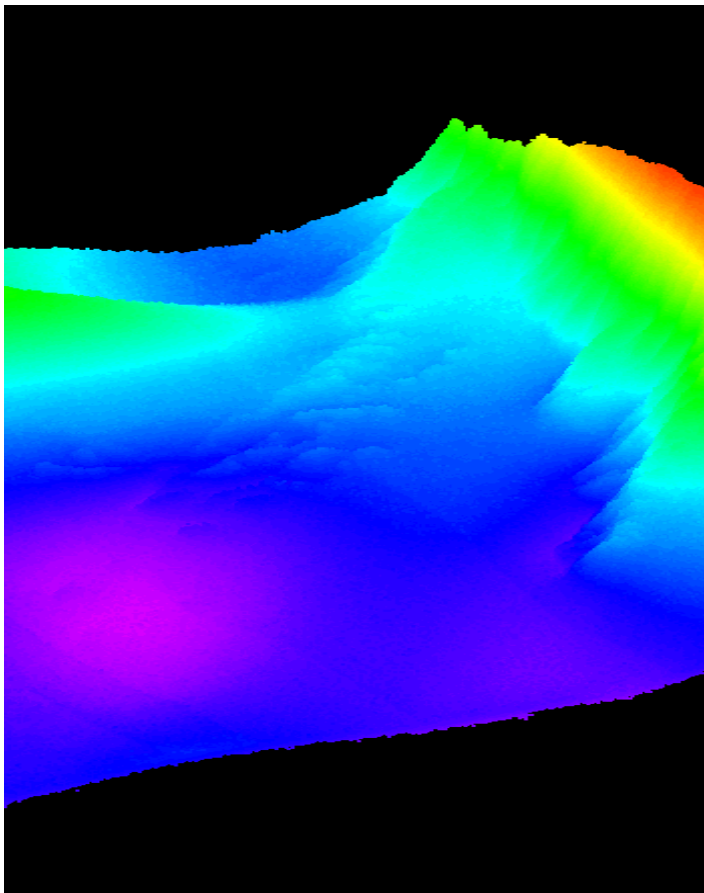


Our Capabilities

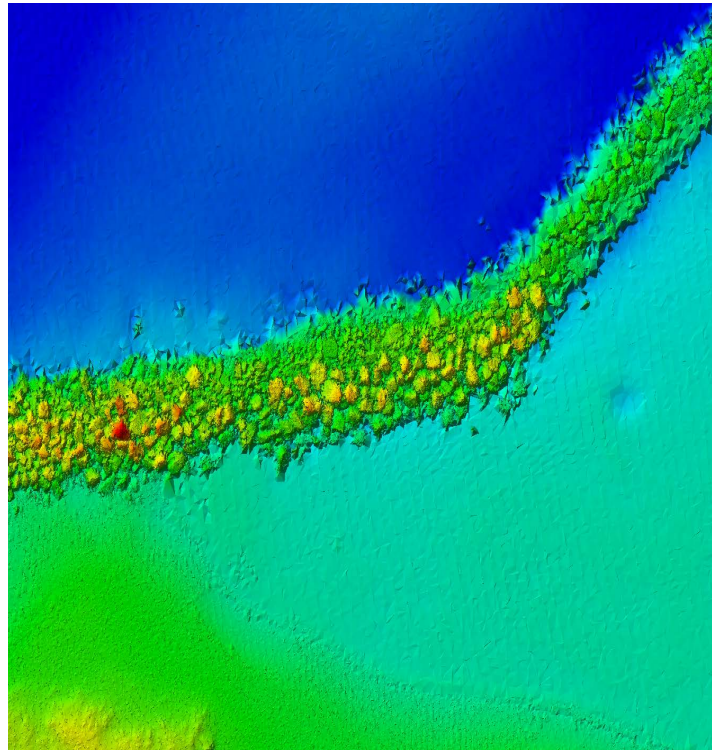
Woolpert has the expertise to provide data for any purpose, from precise volume calculations for dredging projects to hydrographic mapping and charting. Our team of bathymetric survey experts also has the experience and technology to process airborne bathymetric lidar data. By acquiring elevation and water depth simultaneously, we can analyze the entire water column and provide clients with a 3D dataset of what lies underwater.

Bathymetric Lidar

Bathymetric lidar systems accurately scan near-shore and riverine environments, providing seamless elevations along the way. Designed to acquire both topographic and bathymetric data simultaneously, Woolpert's lidar capabilities are ideal for producing a wide range of data deliverables.



*Bathymetric lidar data from a near-shore environment off the Florida coast.
Data courtesy of USACE.*



*Elevation data for jetty located near Destin, Fla.
Data courtesy of the USACE National Coastal Mapping Program.*

Civil Applications

- Coastal mapping and charting
- Coastal management
- Coastal resilience
- Coastal hazards
- Hurricane and disaster response

Military Applications

- Operational environment preparation
- Underwater obstacle and structure detection
- Simulation and training

For more information, please call 800.414.1045
or visit our website at woolpert.com