

# WOOLPERT

## ACROSS THE CAROLINAS

40 YEARS OF SERVICE FROM MOUNTAINS TO SEA



  
**WOOLPERT**  
ARCHITECTURE | ENGINEERING | GEOSPATIAL



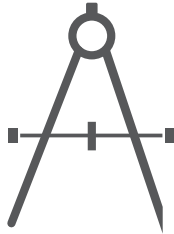
W O O L P E R T

---

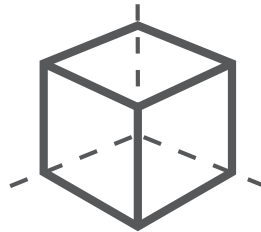
Woolpert has a long history of successful and innovative projects in the Carolinas. With more than 40 years of experience in the region, we've delivered architecture, engineering and geospatial expertise to hundreds of local clients.

Our team boasts 70 area experts and 650 staff members nationwide. Equipped with a host of local offices and services, we have the team, expertise and history needed to bring your project from initial concept to successful completion. From mapping the streets of Charlotte to renovating university housing, our projects touch the entire region—from ground to air and from mountains to sea.

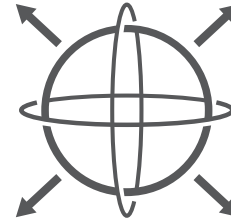
Explore our diverse portfolio, showcasing a multitude of our technology-focused and future-driven Carolinas projects.



ARCHITECTURE



ENGINEERING



GEOSPATIAL

---

## Woolpert specializes in a variety of markets, including:

- Parks and Rec/Athletics
- Higher Education
- Facilities
- Military
- Geospatial
- Aviation
- Water
- Roads and Bridges
- Asset Management



## Mecklenburg County Sportsplex

From planning and construction through completion, Woolpert balanced community input with client needs to deliver a tournament-caliber athletics facility. After conducting three public meetings to secure stakeholder support, the team proposed a \$27M multiuse sports complex, including a 2,700-seat venue, 12 lighted and irrigated fields, restrooms, shelters and a two-story fieldhouse.

## Services

- Architecture and design
- Site design
- Planning
- Economic development
- Geospatial services
- Water management



## UNCG Housing and Quadrangle Renovation

Woolpert designed \$46M of LEED® Gold-certified renovations and additions to the seven residence hall buildings that make up the University of North Carolina at Greensboro's (UNCG) quad. Our environmentally conscious design restored existing facades and architectural features while redeveloping building interiors—aiming to entice students to spend more time on campus through modern amenities and with a nod to the school's rich history.

### Services

- Architecture and design
- Planning and design
- Geospatial services
- Project management



## Mixed-use/Multi-family Concept

Woolpert created a concept with a private developer in the Charlotte region for a mixed-use/multi-family housing project that strengthens community by housing tenants next to businesses and services—creating a true “live-work-play” neighborhood in an urban environment. The concept’s architectural features were carefully chosen to appeal to the desired clientele and to meld classical proportions with modern forms.

## Services

- Architecture and design
- Planning
- Engineering
- Program management



## DoDEA DeLalio Elementary School Replacement

Undersized and plagued by aging utilities infrastructure, DeLalio Elementary School at Camp Lejeune, Jacksonville, N.C., was due for an upgrade. Woolpert assisted the U.S. Department of Defense Education Activity (DoDEA) by replacing its 50-year-old building with a new, 66,000-square-foot, state-of-the-art educational facility. The new school boasts learning neighborhoods, an information center, flex lab, and learning-impaired occupational and physical therapy rooms.

### Services

- Master planning and programming
- Architecture
- Engineering
- Design-build
- Energy solutions



## North Carolina Emergency Management Support

Woolpert partnered with North Carolina emergency management officials to provide lidar imagery for 100 counties. These valuable images continue to help the state forecast flood plain areas and plan for other emergencies. Our work helped support the state's emergency management database and prepare for the future.

## Services

- Airborne data collection
- Mobile mapping
- Field data collection
- Unmanned aerial systems
- Data processing





## South Carolina Airport Imaging

With a charge to update publicly accessible airport aeronautical information, the South Carolina Aeronautics Commission partnered with Woolpert for a five-year, on-call contract to develop high-resolution color orthophotography at more than 30 locations. Woolpert's geospatial expertise played a role in the project's success—helping the team secure a variety of GIS data to stay ahead of FAA regulations.

## Services

- Asset inventory and management
- Facility condition assessments
- GIS integration
- Geospatial services

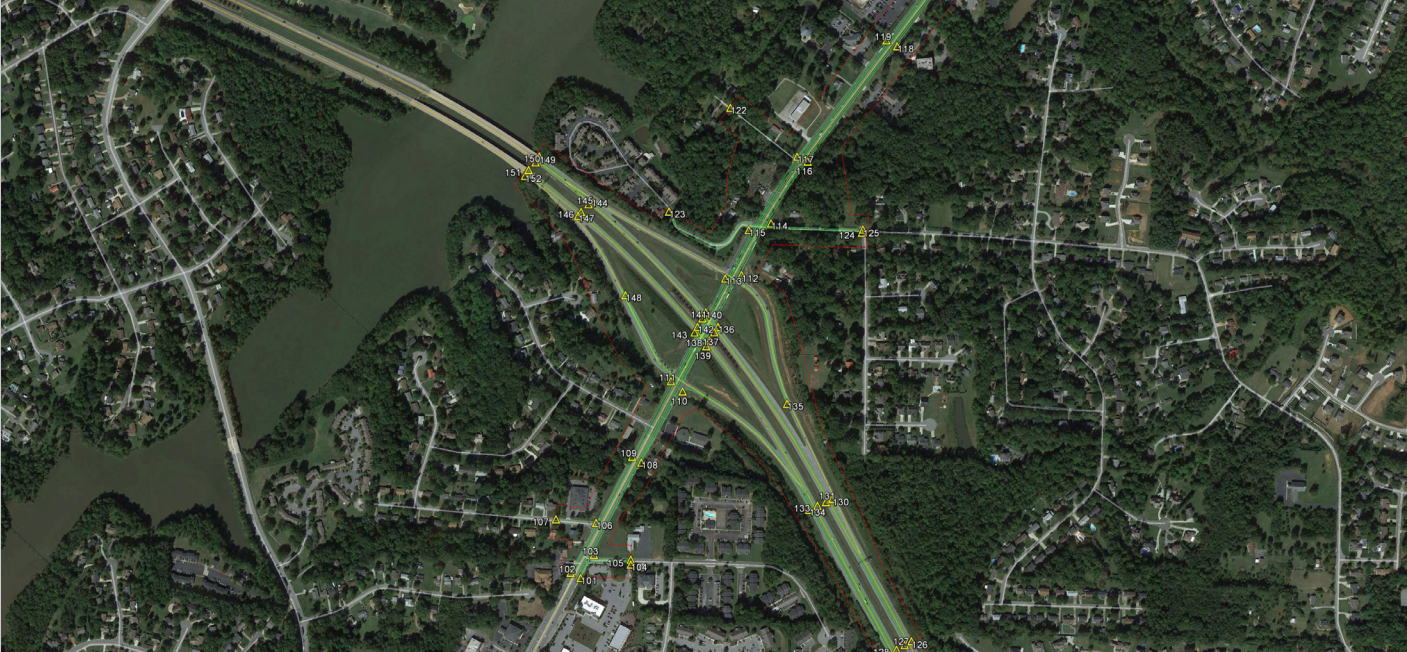


## Greenville County Water Quality Monitoring

For more than a decade, Woolpert and Greenville County have assessed and maintained local water quality. With the help of automated sensors and a remote data collection system, Woolpert ensures the county meets National Pollutant Discharge Elimination System (NPDES) ambient and stormwater monitoring requirements—and can even approximate annual pollutant loads. Data is transmitted to a secure website, allowing real-time access from anywhere with Internet access.

## Services

- Water, stormwater and sewer design
- Asset inventory
- Regulatory compliance
- Stormwater and surface water monitoring



## NCDOT Survey

Woolpert worked with North Carolina's Department of Transportation (NCDOT) to survey and inventory miles of interstates, ramps, under/overpasses and bridges. Using our mobile lidar mapping technology, our team collected incredibly accurate and detailed data at highway speeds—from the safety of our mobile-mapping vehicle and without disrupting the flow of traffic.

## Services

- Asset inventory/management
- Geospatial services
- Mobile mapping
- Lidar
- Surveying
- Planning and analysis



## Raleigh, N.C., Cityworks® Implementation

Setting out to standardize and simplify data storage retrieval for multiple departments, the city of Raleigh, N.C., turned to Woolpert to conduct a citywide implementation of Cityworks—just one of the GIS-centric asset management systems Woolpert can help you apply to your institution. Cityworks helped Raleigh streamline its maintenance and expand asset management capabilities, empowering the city to better use its resources.

## Services

- Asset inventory/management
- Infrastructure optimization
- Land licensing and permitting

# Our Progressive Approach

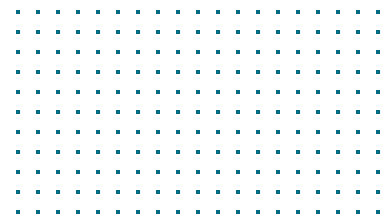
---

Woolpert is one of very few architecture, engineering and geospatial firms that have been in business for more than a century. Our history shapes our competitive advantage. As a result of our time-tested principles and values, we have the courage to push forward in inspired, visionary ways.

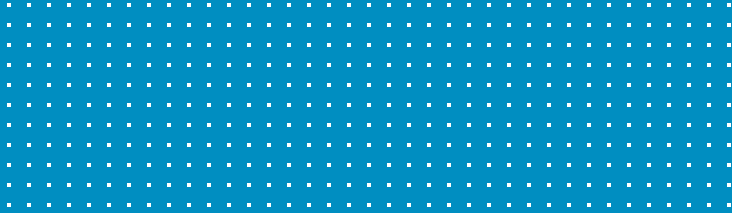
Woolpert's longevity comes from a steady determination to add value to every endeavor—giving us the persistence and ingenuity not only to endure but also to succeed.

**INNOVATE**

**INSPIRE**



# AND



*Our mission is to be one of the nation's most innovative firms, dedicated to solving our clients' problems through creative applications of technology.*

## Carolinas Offices

---

Charlotte, N.C.

Columbia, S.C.

Mount Pleasant, S.C.

Greenville, S.C.



For more information, call 800.414.1045  
or visit [woolpert.com/carolinas](http://woolpert.com/carolinas)