



GEOSPATIAL CAPABILITIES

FOR UTILITIES



One of Woolpert's core competencies is bringing new geospatial data services to solve problems once thought impossible or too expensive. As the global leader providing state-of-the-art geospatial data services, we integrate industry expertise and artificial intelligence solutions to deliver accurate and current mapping content to proactively address needs for electric distribution and transmission infrastructure, broadband, natural gas, petroleum, and renewable utilities.

Woolpert is forging partnerships with established solution providers in the power industry to provide groundbreaking capabilities. We outline how to determine the location and condition of current assets and the creation of effective power delivery methods, while helping elevate technology and innovation for you and your clients. There is no limit to the analytic products that can be derived from this rich data—anything from corridor maps and vegetation analysis to pole loading analysis and solar farms analysis.

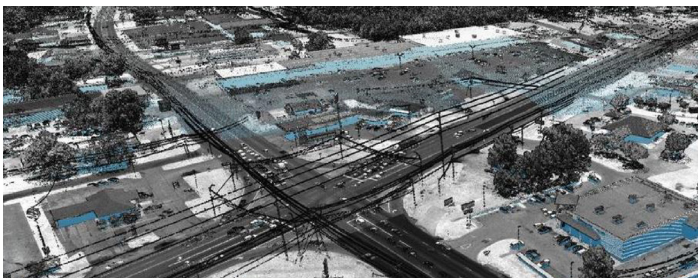
112+
YEARS
EXPERIENCE

800+
GEOSPATIAL
STAFF

1M+
SQUARE KILOMETERS
COLLECTED ANNUALLY

\$75M+
INVESTMENT IN LIDAR
TECHNOLOGY

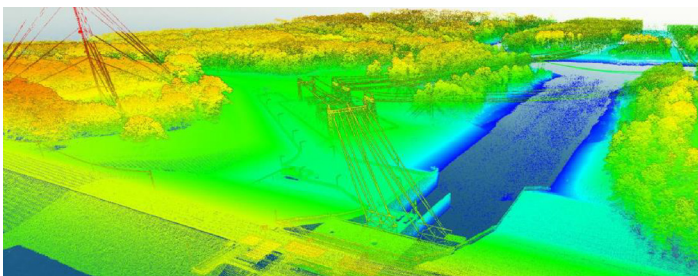
WHO WE SERVE



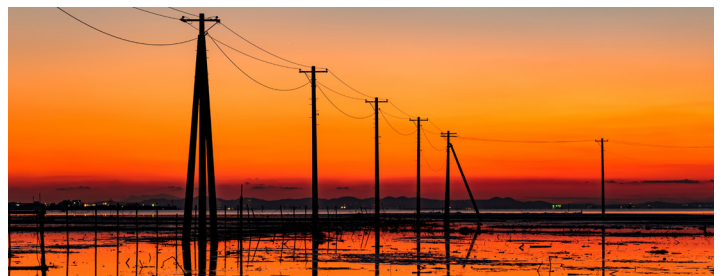
ELECTRIC INFRASTRUCTURE



PETROLEUM INFRASTRUCTURE



RENEWABLE INFRASTRUCTURE



BROADBAND INFRASTRUCTURE

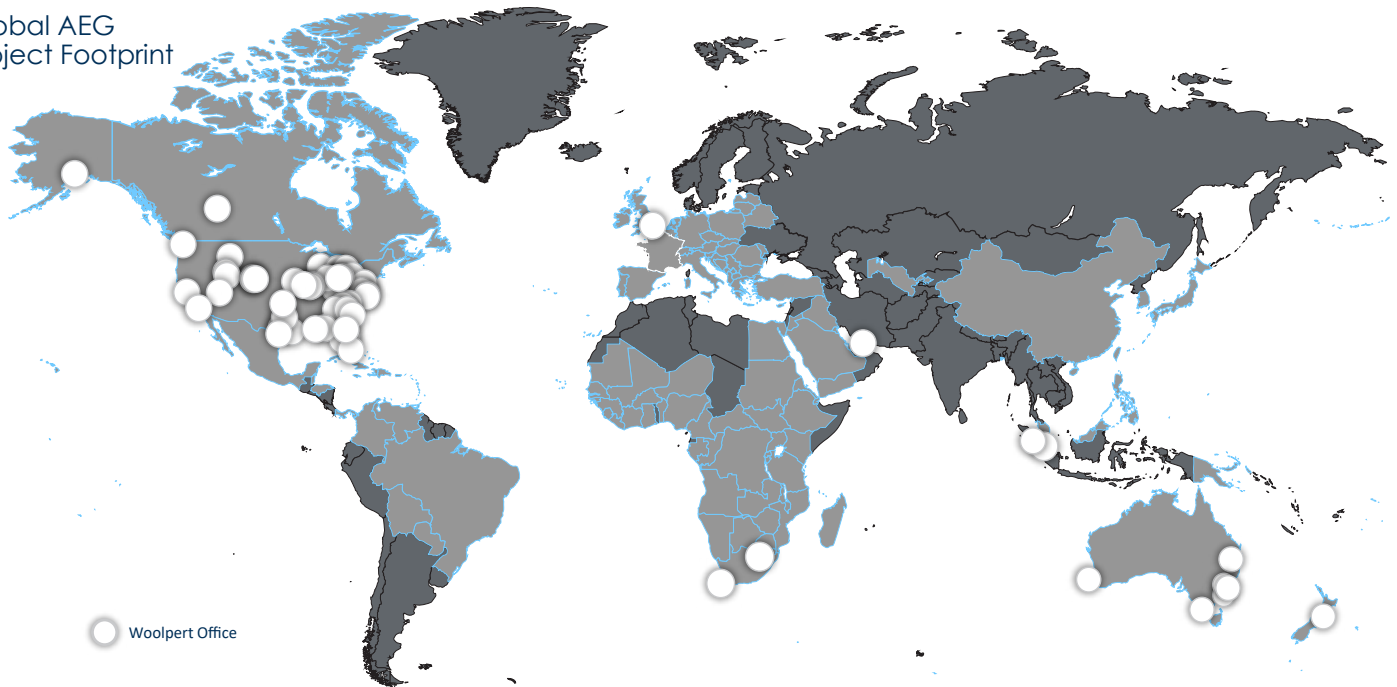
SERVICES

- Aerial imagery
- Bathymetric mapping
- BIM
- Consulting
- Enterprise GIS
- GIS solutions
- High-density lidar
- Mobile mapping
- Photogrammetry/remote sensing
- Sensor development
- Station scanning and modeling
- Subsurface utility engineering (SUE)
- Surveying
- Terrestrial scanning
- Uncrewed aircraft systems (UAS)
- Utility locating and mapping

APPLICATIONS

- As-builts
- Asset management
- Conflation
- Digital twins
- Fleet route management
- Haul route scanning, monitoring, and design
- Hydroelectric dams
- Joint use, make ready
- Lidar classification
- Make ready, pole loading calculation and analysis
- Modeling and analysis
- Off-shore wind farms
- Solar developments
- Transmission, distribution and substations
- Vegetation management

Global AEG
Project Footprint



North America

Athens, AL	Cincinnati, OH	Egg Harbor Township, NJ	Indianapolis, IN	Miami, FL	Provo, UT	St. George, UT	Calgary, Canada
Atlanta, GA	Cleveland, OH	Fairfax, VA	Jackson Hole, WY	N. Charleston, SC	Richmond, VA	St. Louis, MO	
Austin, TX	Columbia, SC	Fairview Heights, IL	Jacksonville, FL	Oklahoma City, OK	Salt Lake City, UT	St. Petersburg, FL	
Bay St. Louis, MS	Columbus, OH	Fort Worth, TX	Jefferson City, MO	Orlando, FL	San Antonio, TX	Toledo, OH	
Charlotte, NC	Cypress, TX	Greenville, SC	Kansas City, MO	Pensacola, FL	San Jose, CA	Ventura, CA	
Chesapeake, VA	Dayton, OH	LaPorte, TX	LaPorte, TX	Pittsburgh, PA	San Rafael, CA	Virginia Beach, VA	
Chicago, IL	Denver, CO	Houston, TX	Lexington, KY	Port Orchard, WA	Springfield, OH	Wasilla, AK	

Europe

London, UK

Asia

Kuala Lumpur, Malaysia
Singapore

Australia and New Zealand

Fortitude Valley, QLD
Macquarie Park, NSW
Napier, NZ
Perth, WA
Richmond, VIC
Sydney, NSW
Wollongong, NSW

Africa and Middle East

Abu Dhabi, UAE
Cape Town, RSA
Johannesburg, RSA

Map data provided for informational and communication purposes only | Updated 12.12.2022

Kristi Norman | Utilities Geospatial Market Director
972.977.8758
kristi.norman@woolpert.com
woolpert.com

